



# **The Institution of Mechanical Engineers Asia Oceania Forum Meeting**

(Kuala Lumpur, Malaysia)

## **Hong Kong Branch Report (4 - 5 April 2009)**

Dr C W Tso  
Hong Kong Branch Chairman

## **CONTENTS**



- 
- 1. Hong Kong Branch Committee (Session 2008-09)**
  - 2. Branch Business Plan**
  - 3. Branch Events/Activities with Photos (Session 2008-09)**
  - 4. Issues and Concerns**

## 1.1 Hong Kong Branch Committee (2008-09 Session)



<b>Chairman</b>	<b>Dr. C W Tso</b>
<b>Vice Chairman</b>	<b>Mr. W K Chow</b>
<b>Hon Secretary</b>	<b>Mr. Simon Mak</b>
<b>Hon Treasurer</b>	<b>Dr. Arthur Wong</b>
<b>Past Chairman</b>	<b>Mr. Edmund Leung</b>
<b>Past Chairman</b>	<b>Mr. Otto Poon</b>
<b>Info &amp; Comm. Officer</b>	<b>Mr. Coleman Ng</b>
<b>Activity Convener</b>	<b>Mr. Y Y Kwok</b>
<b>Activity Convener</b>	<b>Mr. Franky Shum</b>
<b>Committee Member</b>	<b>Dr. Simon Ho</b>
<b>Committee Member</b>	<b>Prof. Dennis Leung</b>
<b>Committee Member</b>	<b>Mr. K S Szeto</b>
<b>YMS Chairman</b>	<b>Mr. Lawrence Chan</b>
<b>YM AOF Rep</b>	<b>Mr. Ricky Kan</b>



## 1.2 Membership Statistics (Year 2006 to Year 2009)



	30 April 2006	30 April 2007	30 April 2008	26 March 2009	
Hon Fellow / Fellows	89	95	95	94	(↓ 1.05%)
Members	1,215	1,242	1,252	1254	(↑ 0.16%)
Associates	474	418*	400*	388*	(↓3.00 %)
Affiliates	330	620**	720**	792**	(↑10.00%)
	2,108	2,365	2,468	2528	(↑2.43%)

\* Area of Concern

\*\* Result of Free Student Membership

### 1.3 Professional Interview (2005 – 2009)



	Year 2005 (1 Jan - 31 Dec 2005)	Year 2006 (1 Jan - 31 Dec 2006)	Year 2007 (1 Jan - 31 Dec 2007)	Year 2008 (1 Jan – 31 Dec 2008)	Year 2009 (1 Jan 2009 to Mar 2009)
Applications:	58	60	43	38	10
Success Rate:	36 (62.07%)	38 (63.33 %)	30 (69.8%)	24 (66.7% out of 36 interviews conducted)	2 (100% out of 2 interviews conducted)

## 2. Business Plan - Objectives



1. **The Branch will strive to sustain and remain the role model for other overseas branches in term of membership recruitment and retention, professional networking, members services as well as commitment in raising the profile of IMechE in Hong Kong.**
2. **The Branch will continue to facilitate professional networking via series of joint functions with sister institution aiming to achieve effective and efficient resource sharing, collective learning and timely knowledge and experience exchange**
3. **The Branch will give full support, guidance and advice to the Young Member Section in all areas of it operation, in particular the recruitment, training and development of young members to become professional engineers.**

## 2.1 Business Plan - Specifics



1. The Branch will participate in Asia Oceanic Forum with an aim to strengthening the bonding in the Region and to represent and advise view, suggestion and issues of concerns from the Region to the ISB.
2. The Branch will support the Institution's international strategy to develop the profile of IMechE in Mainland China to support and develop the profession as well as membership.
3. The Branch will continue to work with the YMS in the implementation and strengthening following membership recruitment initiatives  
*Facilitate the operations of Student Chapters in local universities.*  
*Organize twice yearly Seminar on Route to Corporate Membership*  
*Administrate the Professional Development Tutorship Program*  
*Organize the Speak Out for Engineering Competition*  
*Co-organize Visits to Secondary Schools*  
*Co-organize Final Year Student Project Competition*  
*Co-organize Young Inventor Competition*

## 2.2 Business Plan - Specifics



4. The Branch will organize/co-organize not less than 50 learned society activities with local engineering professional institutions and other bodies beyond the engineering disciplines across wide range of disciplines covering soft skills, and to facilitate members to share view/experiences as wee to do networking.
5. The Branch will Seek opportunities to offer views/advice to Hong Kong Government and media on energy, environment, sustainable development and transport issues with media coverage.
6. The Branch will continue to capitalize on the synergy benefits of having a Joint ICE/IMechE Office to co-promote events and activities that are of common interest to members of both Institutions, and to forge close cooperation.
7. The Branch will continue to enhance its communication channel to members and keep members promptly informed of Branch events/activities with the wider use of website and email.

### 3.1 Branch Events/Activities (1/6)



1	24 May 08 (Sat)	IMechE Team participated in HKIE MMNC Division 30th Anniversary Colour Boat Racing Cup (Joint Function)
2	6 Jun 08 (Fri)	Seminar on ANSUS CFD Modelling Application in Engineering Industry
3	6 Jun 08 (Fri)	2008 symposium on i-Management – Challenges and Opportunities (Supporter)
4	10 Jun 08 (Tue)	Presentation Workshop on Impromptu Speaking (Making a speech/presentation without preparation) (Join function)
5	12 Jun 08 (Thur)	Fund Raising – Rebuild Sichuan “We Care May 12 Quake Relief Night” – Jointly organized by local engineering professional bodies
6	3,8,10 & 12 Jul 08	Conference Training Course on Energy Audit & Energy Conservation (Joint Function)
7	18 Jul 07 (Fri)	Conference on Disasters: Preparedness, Response & Recovery (Supporter)
8	23 Jul 08 (Tue)	Talk on Professional & Dynamic :Leadership Communication Skills : Learn to present more effective as a Leader (Joint function)
9	23 Jul 08 (Tue)	Seminar on Ecological Sustainable Design for Building

### 3.2 Branch Events/Activities (2/6)



10	27 Jul 08 (Sat)	Competition on Inter-School Solar Vehicle Model Design Contest (Joint function)
11	30 Jul 08 (Wed)	Seminar on Building Energy Benchmarking
12	30 Jul (Wed)	Undergraduate Final Year Project Competition Submission closing (Joint function)
13	9 Aug 08 (Sat)	Technical Visit to HKUST CLP Wind/Wave Tunnel Facility
14	16 Aug 08 (Sat)	Technical Visit to Hong Kong Air Cargo Terminals
15	26 Aug 08 (Tue)	YMS Committee Informal Dinner with Branch Officers
16	1 Sep 08 (Mon)	Seminar by Young Engineers for 512 Sichuan Province (Experience sharing on relief work) (Jointly organized by local engineering professional bodies)
17	22 Sep 08 (Mon)	Seminar on Green Design for Product and Environment
18	30 Sep 08 (Tue)	Seminar on Youth Marketing Strategy and Social Responsibility (Joint function)

### 3.3 Branch Events/Activities (3/6)



19	4 Oct 08 (Sat)	Presentation Workshop on "Toolbox for making Your Presentation Lively & Interactive (Joint Function)
20	4 Oct 08 (Sat)	Seminar on Service Marketing (Joint Function)
21	9 Oct 08 (Thur)	Technical Visit to Johnson's Control
22	20 Oct 08 (Mon)	Seminar on Tactics in Promoting your Engineering Business to Clients
23	23 Oct 08 (Thur)	Seminar on How Quality Management System to be established for an Organization
24	31 Oct 08 (Fri)	Seminar on Simulation in Building & Civil Engineering – Evacuation, Infrastructure a& Airflow Solutions (Supporter)
25	1 Nov 08 (Mon)	23rd International Coastal Cleanup – Rocky Bay, Hong Kong Island (Supporter)
26	3 Nov 08 (Tue)	<b>George Stephenson Lecture cum Presidential Reception</b>
27	4 Nov 08 (Thur)	Professional Review Interview Assessor Workshop – organized by HQs

### 3.4 Branch Event/Activities (4/6)



28	15 Nov 08 (Sat) 22 Nov 08 (Sat)	<b>Young Inventor Competition Promotion for Secondary Schools - Information Session &amp; First Round Competition (Joint function)</b>
29	27 Nov 08 (Thur)	Route to Mmembershhip cum Tutorship Program
30	28 Nov 08 (Fri)	Technical Visit to Green Island Cement Plant
31	30 Nov 08 (Sat)	IMechE Team participated in HKIE MMNC Division 30th Anniversary Football Cup (Joint function)
32	4 Dec 08 (Thur)	Seminar on Negotiation Skill
33	6 Dec 08 (Sat)	Technical Visit to HKIVE Motor Servicing Centre
34	13 Dec (Sat)	Christmas Party (Joint function)
35	16 Dec 08 (Tue)	Seminar on Process Safety Control System (Joint function)
36	19 Dec 08 (Fri)	Seminar on Secrets of Effective Power Point (Join function)

### 3.5 Branch Events/Activities (5/6)



37	10 Jan 09 (Sat)	Tram Parade Around HK Island - Young Engineers for 512 Sichuan Quake Relief Work (Joint Function)
38	10 Jan 09 (Sat)	Speak Out for Engineering Presentation Competition
39	18 Feb 09 (Wed)	Seminar on Application of Electrical Infrared Thermography Technology
40	19 Feb 09 (Thur)	Technical Visit to Air Traffic Control Tower
41	21 Feb 09 (Sat)	BBQ cum Sharing with Outstanding Engineers (Joint function)
42	28 Feb 09 (Sat)	Youth Media and Culture Marketing Conference (Joint function)
43	28 Feb 09 (Sat)	Young Inventor Competition for Secondary Schools – Final Round (Joint function)
44	1- 4 Mar 09	1st International Conference on Utility Management & Safety (Supporter)
45	4 Mar 09 (Wed)	Seminar on Tunnel and Station Design Train Fire Scenarios – Fundamental Issue (Joint function)

### 3.6 Branch Events/Activities (6/6)

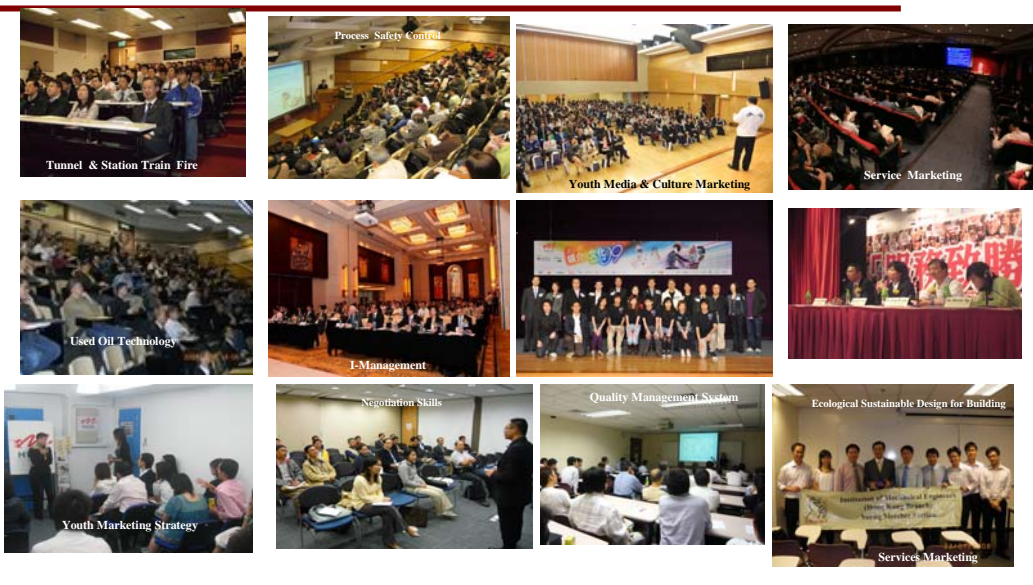


46	7 Mar 09(Sat)	Visit to Olympic Waste Composting Plant
47	9 Mar 09 (Mon)	Talk on Calibration of High Precision Angle Standards (Joint Function)
48	2 Apr 09 (Thur)	Talk on Mechanical Engineer – Helping Reduction in Carbon Emission
49	10 Apr 09 (Fri)	Visit to Toyota Assembly Line
50	23 Apr 09 (Thur)	Talk on Crane Safety
51	24 Apr 09 (Fri)	Conference on Advanced Technology in Transportation for a Better Environment (Supporter)
52	8 May 09 (Fri)	YMS AGM and Route to Membership
53	8 May 09 (Fri)	Certificate Course on Design and Implementation of Road Tunnel Ventilation (Joint function)
54	14 May 09 (Fri)	Hong Kong Branch AGM and Annual Dinner

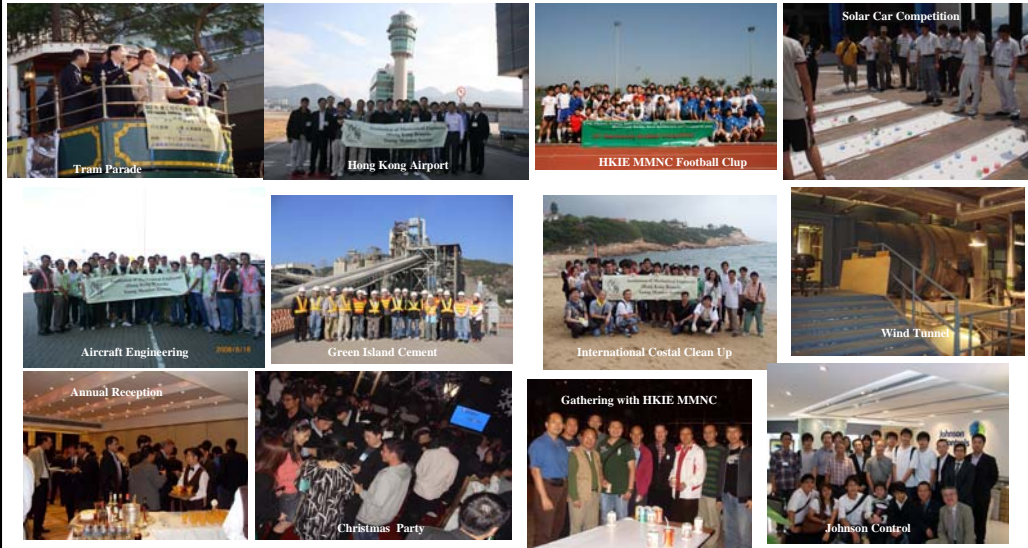
### 3.7 Branch Activities Photos (1/3) (Major Events)



### 3.8 Branch Activities Photos (2/3) (Talks/Seminars/Conference)



### 3.9 Branch Activities Photos (3/3) (Visit/Social Function)



## 4. Issues and Concerns



1. High Annual Subscriptions Fees (GPB190) compared with local professional institution (Hong Kong Institution of Engineers (HKIE) - HK\$1,700 (i.e. GPB150)
2. Disparity of academic requirements for corporate membership (*Master Degree for IMechE vs. Bachelor Degree for Local Professional Institutions*)
3. Corporate Membership of HKIE is preferred in requirements stipulated in recruitment of professional engineers for Civil Services
4. Apart from the qualification of "Chartered Engineer" and net working through participation in Branch activities, many members do not see great value of their IMechE corporate membership. The adoption of Professional Engineering Magazine on Line has worsen the situation.
5. Membership in the Class of Members and Associates appears to be not so sustainable in long term.
6. Shortage of seasoned Assessors to undertake Corporate Membership Professional Interview due to business commitment and work loads, coupled with the busy work schedule of Applicant has resulted in rather long turn around time from receipt of application to return of recommendation to HQs.



**THANK YOU**